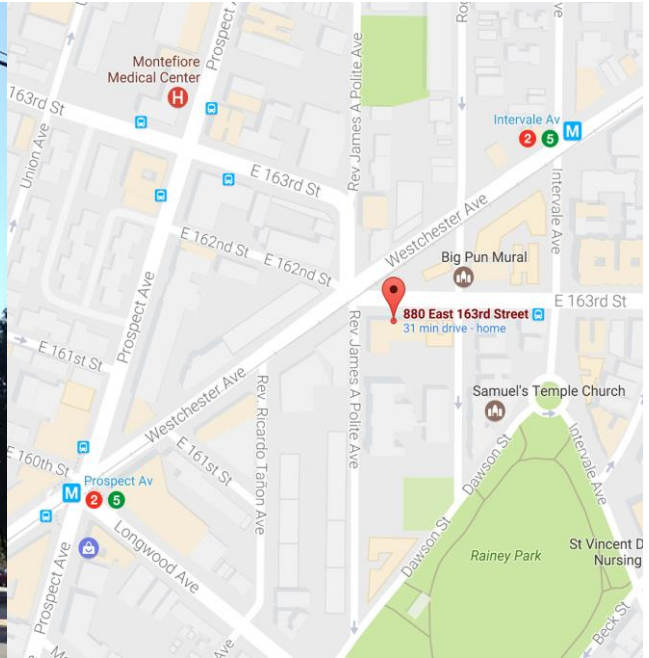


FOR LEASE: RETAIL SPACE

880 EAST 163RD STREET, BRONX, NY



Source: Google Maps

LOCATION:

Intersection of East 163rd Street, Westchester Avenue and Rev. James A Polite Avenue

SIZE: 1,260 Sq. Ft.

DETAIL:

Corner location, sprinklered, existing bathroom and kitchenette, Bx6 bus stop directly outside store

AVAILABILITY: Immediate

RENT: \$4,500/month

DEMOGRAPHICS:

	0.25mi	0.5mi	1.0 mi
Population	12,837	52,540	165,389
Median HH Income	\$30,133	\$27,431	27,802
Median Age	25.5	25.9	25.7

TRANSPORTATION:

BUS:

Bx6: Hunts Point - Riverside Drive, 7,060,886 annual commuters, 23,467 daily commuters

Bx4: Westchester Square - The Hub, 3,781,876 annual commuters, 11,901 daily commuters

SUBWAYS:



Prospect Avenue (0.2mi), 2,125,066 annual commuters;

Intervale Avenue (0.2mi), 937,280 annual commuters

ANNUAL AVERAGE DAILY

AUTOMOBILE TRAFFIC:

11,150 vehicles at the intersection of Westchester Avenue and East 163rd Street

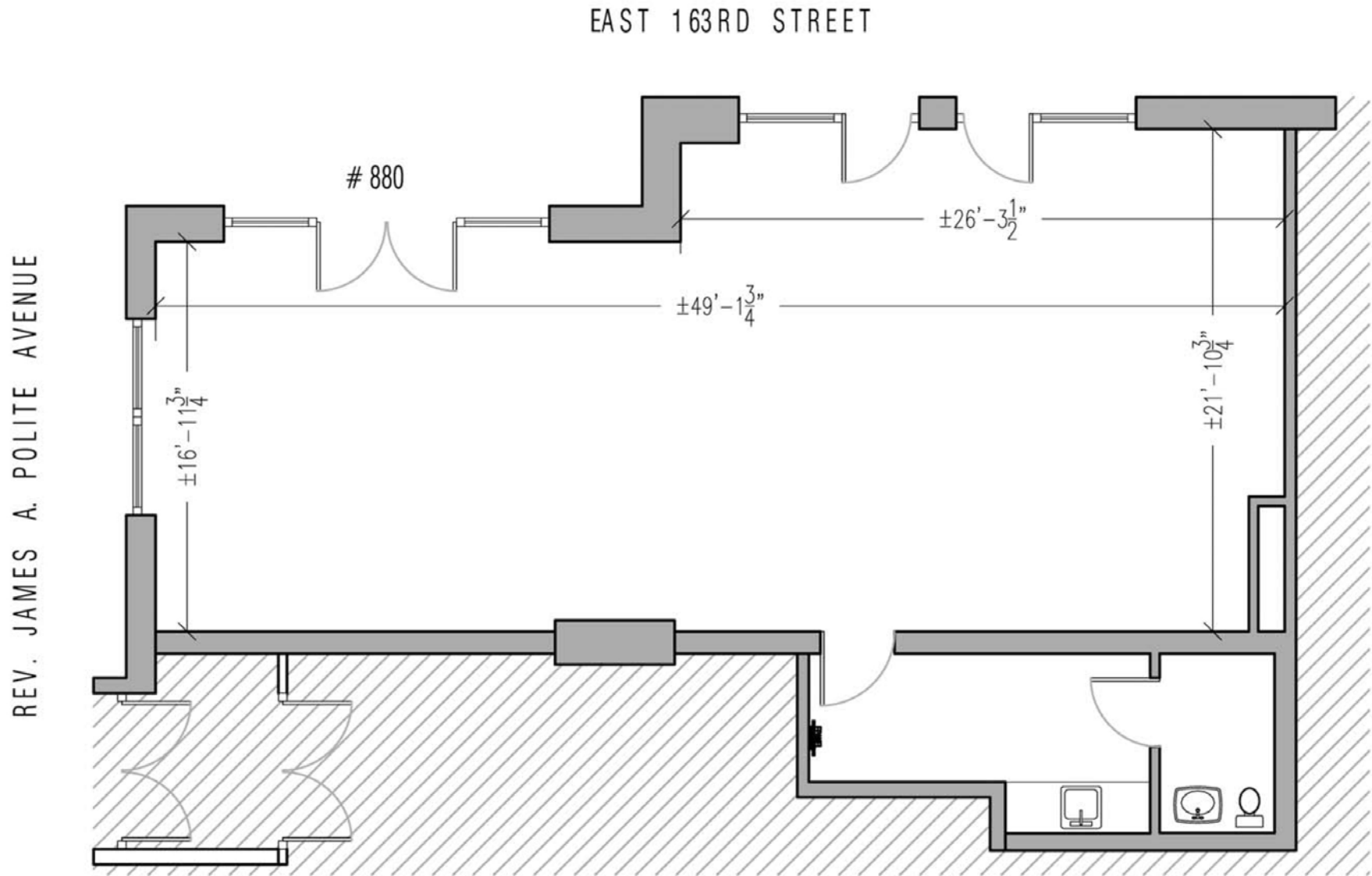
CONTACT:

Christina Warner

917.647.1966

cwarner@lmdevpartners.com





CONTACT:

Christina Warner 917.647.1966 cwarner@lmdevpartners.com

