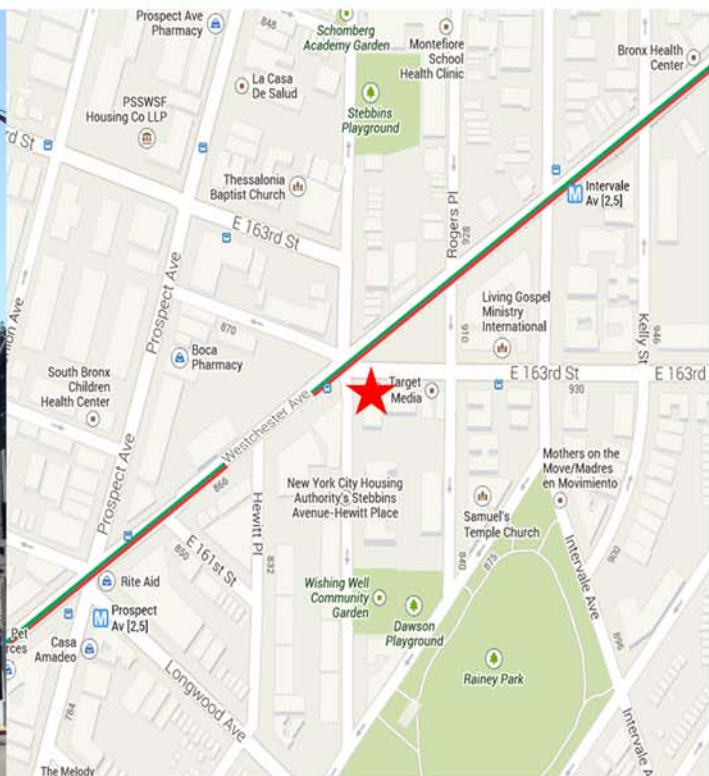


# 880 E. 163rd STREET, BRONX, NY

## FOR LEASE: Retail Space



**Size:** 1,260 Sq. Ft.

**Location:** Intersection of E. 163rd St., Westchester Ave., and Rev. James A Polite Ave.

**Details:** Corner location, sprinklered, existing bathroom and kitchenette, Bx6 bus stop directly outside store

### Demographics:

	0.25 mi	0.5 mi	1.0 mi
Population	12,837	52,540	165,389
Median HH Income	\$30,133	\$27,431	\$27,802
Median Age	25.5	25.9	25.7

**Availability:** Immediate

**Rent:** \$4,500 / month

### Transportation:

#### Bus:

Bx6: Hunts Point - Riverside Drive, 7,060,886 annual commuters, 23,467 daily commuters

Bx4: Westchester Square - The Hub, 3,781,876 annual commuters, 11,901 daily commuters

**Subway:** **2** **5** **Prospect Ave** (0.2mi.), 2,125,066 annual commuters ; **Intervale Ave** (0.2mi), 937,280 annual commuters

**Annual Average Daily Automobile Traffic** = 11,150 vehicles at the intersection of Westchester Ave and E 16rd St

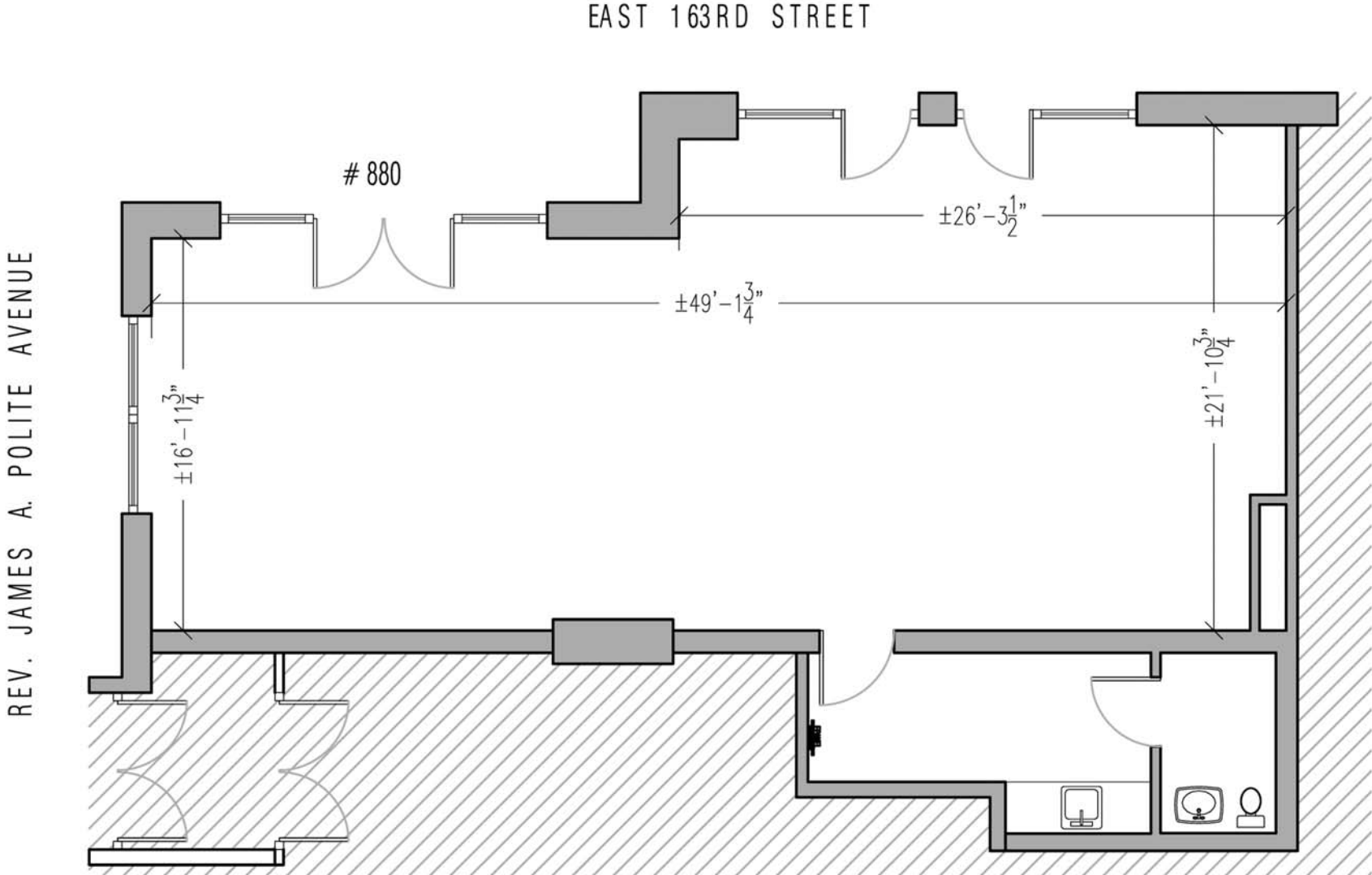
CONTACT

Christina Warner ■ (917) 647-1966 ■ cwarner@lmdevpartners.com



Development Partners

# FLOORPLAN



CONTACT

Christina Warner ■ (917) 647-1966 ■ [cwarner@lmdevpartners.com](mailto:cwarner@lmdevpartners.com)

