

FOR LEASE: RETAIL SPACE

2738 8th Avenue, NY, NY

LOCATION:

Frederick Douglass Blvd by West 146th Street

SIZE: 3,070 SF

DETAIL: Near by tenants include Popeyes, NY Sports Club, Bank of America and Dollar Tree

AVAILABILITY: Immediate

RENT: Please call

TRANSPORTATION:

BUS:

Bx19: (Frederick Douglass Blvd/W 145th St.)

9,501,429 annual commuters (Rank: 11)

M10: (Frederick Douglass Blvd/W 145th St.)

2,302,452 annual commuters (Rank: 105)

SUBWAY:

145th Street Station: (0.2miles)

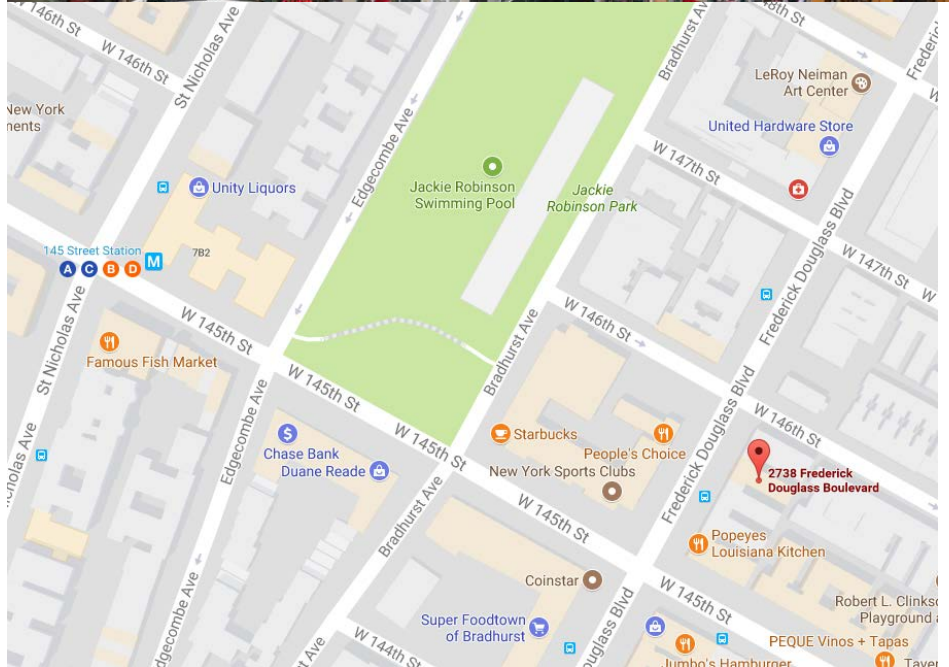
7,949,593 annual riders (Rank: 50)



ANNUAL AVERAGE DAILY

AUTOMOBILE TRAFFIC:

- 13,409 vehicles travel on Frederick Douglass Blvd by West 146th Street daily
- 17,116 vehicles travel on West 145th Street by Frederick Douglass Blvd daily



Source: Google Maps

DEMOGRAPHICS:

	0.25mi	0.5mi	1.0 mi
Population	20,897	70,882	202,198
Median HH Income	\$40,732	\$38,151	\$33,765
Median Age	34.8	35.2	35.7

CONTACT:

Christina Warner

917.647.1966

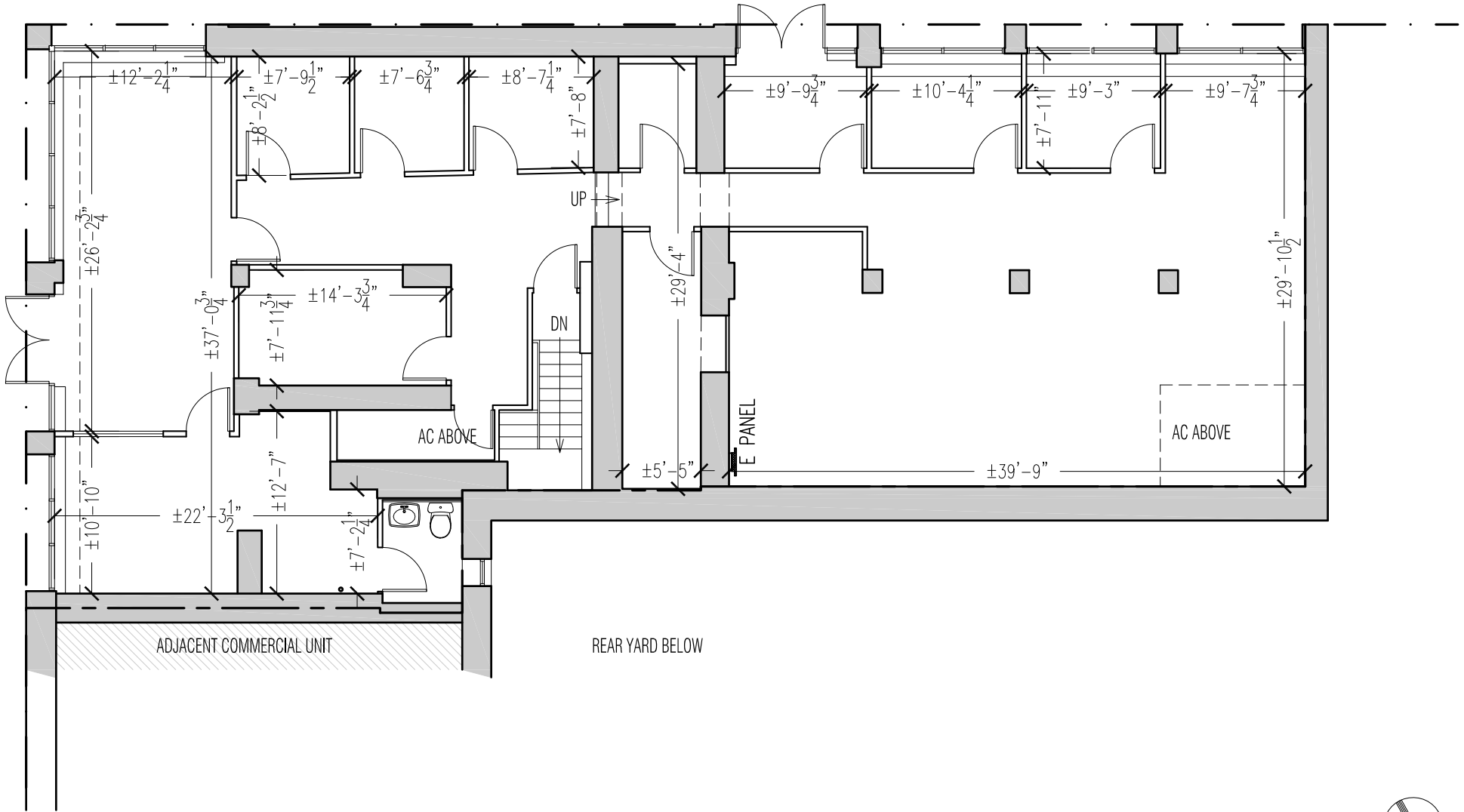
cwarner@lmdevpartners.com



NOTE: DIMENSIONS SHOWN ON THESE DRAWINGS ARE FOR CONVENIENCE IN PLANNING AND SHOULD BE VERIFIED IN THE FIELD AS NEEDED. DIMENSIONS SHOWN ON THESE DRAWINGS ARE NOT GUARANTEED IN ANY WAY BY ANY OF THE INVOLVED PARTIES.

WEST 146TH STREET

FREDERICK DOUGLAS BOULEVARD



NORTH

NOTE: DIMENSIONS SHOWN ON THESE DRAWINGS ARE FOR CONVENIENCE IN PLANNING AND SHOULD BE VERIFIED IN THE FIELD AS NEEDED. DIMENSIONS SHOWN ON THESE DRAWINGS ARE NOT GUARANTEED IN ANY WAY BY ANY OF THE INVOLVED PARTIES.

