

# FOR LEASE: RETAIL SPACE

# 320 ST. NICHOLAS AVE, NY, NY

## LOCATION:

Corner of West 126<sup>th</sup> Street & St. Nicholas Ave

**SIZE:** 1,696 Sq. Ft.

**DETAIL:** Neiboring tenants are Dunkin Donuts, Popeyes, Party City, and Capital One Bank

**AVAILABILITY:** Immediate

**RENT:** Please call

## TRANSPORTATION:

### BUS:

- Bx15:** 8,952,781 annual riders
- M60-SBS:** 5,539,186 annual riders
- M100:** 5,294,225 annual riders
- M101:** 7,643,449 annual riders
- M3:** 4,215,003 annual riders

## SUBWAY:

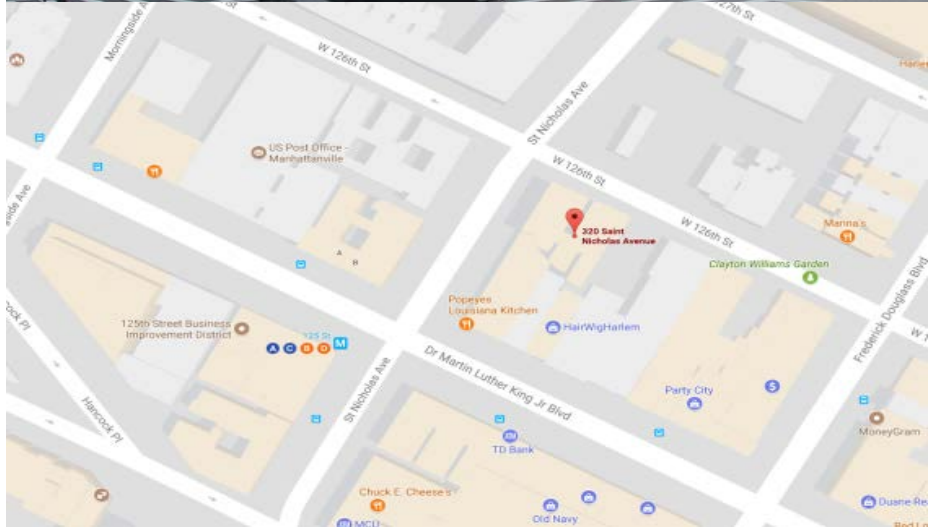


- Annual Ridership on ABCD 125<sup>th</sup> Street Station:** 9,603,878

## ANNUAL AVERAGE DAILY AUTOMOBILE TRAFFIC:

- 22,579 vehicles on West 125<sup>th</sup> Street by St. Nicholas Ave daily
- 13,409 vehicles on Frederick Douglass Blvd by West 126<sup>th</sup> Street daily
- 5,468 vehicles on Morningside Ave by West 126<sup>th</sup> Street

Source: NY DOT



Source: Google Maps

## DEMOGRAPHICS:

	0.25mi	0.5mi	1.0 mi
Population	15,430	45,418	169,972
Median HH Income	\$30,808	\$37,256	\$39,232
Median Age	35.3	33.8	34.7

## CONTACT:

**Christina Warner**

917.647.1966

cwarner@lmdevpartners.com



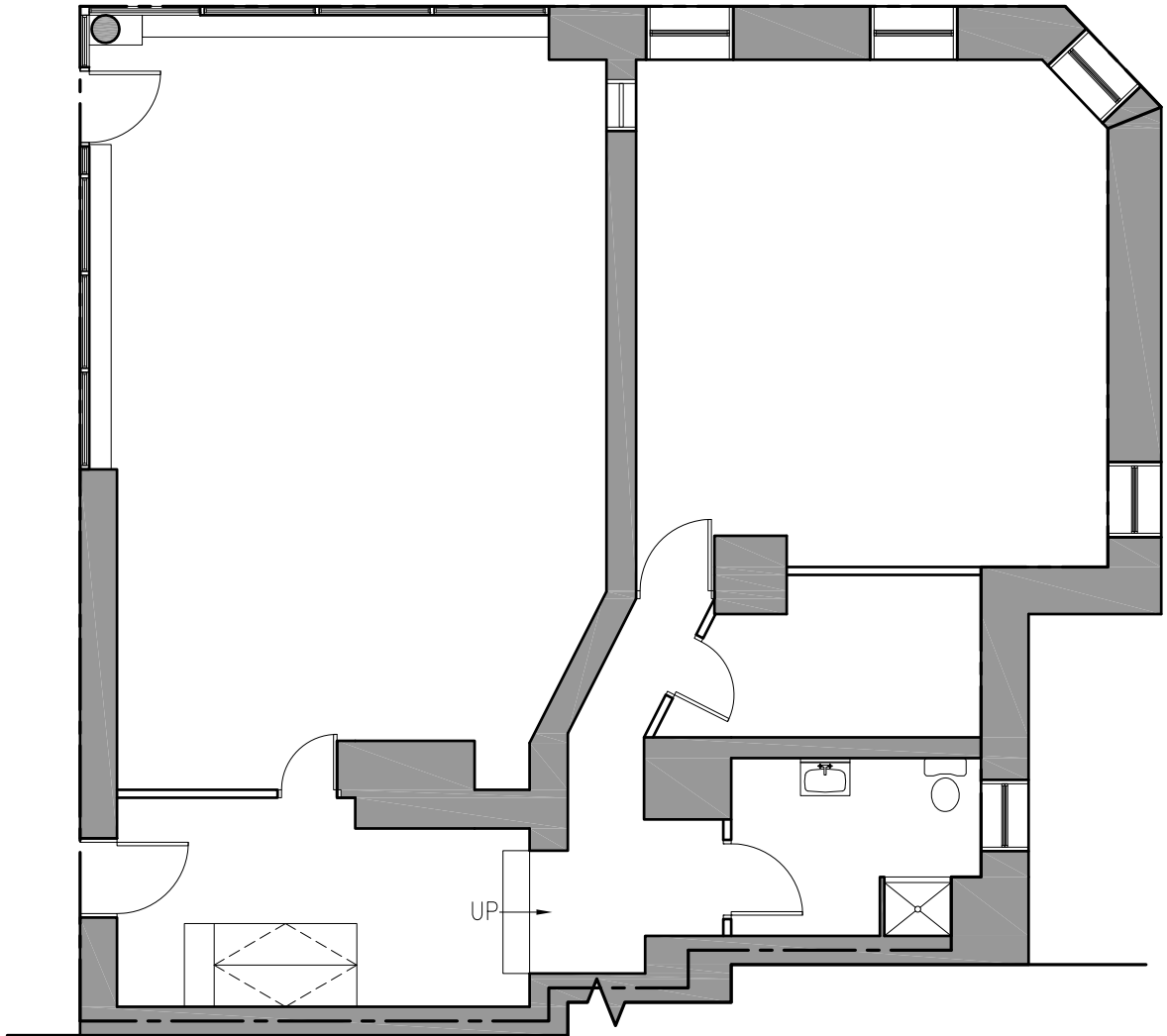
Development  
Partners

NOTE: DIMENSIONS SHOWN ON THESE DRAWINGS ARE FOR CONVENIENCE IN PLANNING AND SHOULD BE VERIFIED IN THE FIELD AS NEEDED. DIMENSIONS SHOWN ON THESE DRAWINGS ARE NOT GUARANTEED IN ANY WAY BY ANY OF THE INVOLVED PARTIES.

© 2015 GUARDIA ARCHITECTS

W 126TH STREET

ST. NICHOLAS AVENUE



1 FLOOR PLAN — 1ST FLOOR — EXISTING CONDITIONS  
— SCALE: 1/8"=1'-0"



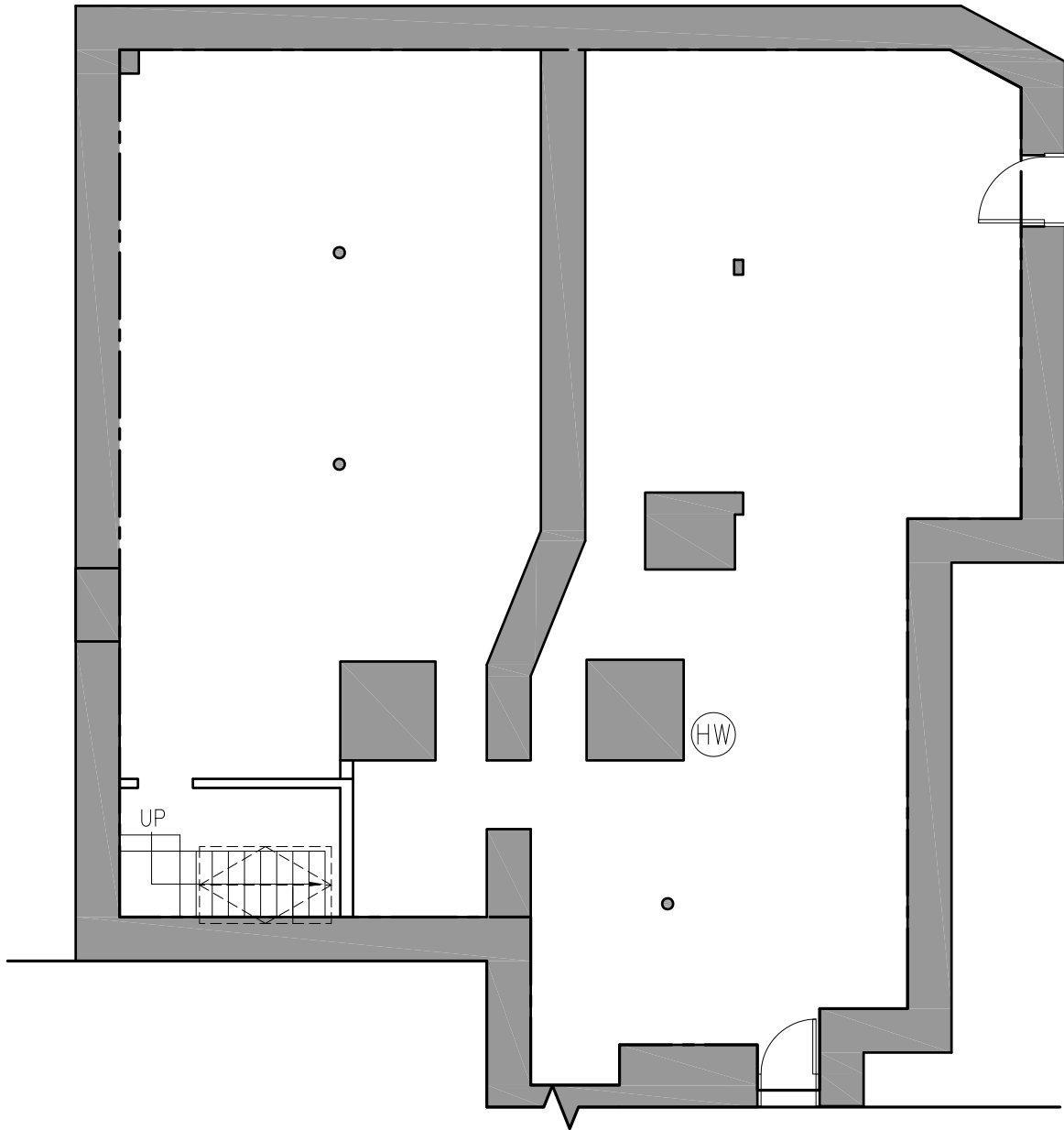
320 ST NICHOLAS AVENUE, NEW YORK, NY 10027

GUARDIA ARCHITECTS, 233 DELAVAN AVENUE, NEWARK, NJ 07104 862-576-8066

6/2/2015

NOTE: DIMENSIONS SHOWN ON THESE DRAWINGS ARE FOR CONVENIENCE IN PLANNING AND SHOULD BE VERIFIED IN THE FIELD AS NEEDED. DIMENSIONS SHOWN ON THESE DRAWINGS ARE NOT GUARANTEED IN ANY WAY BY ANY OF THE INVOLVED PARTIES.

© 2015 GUARDIA ARCHITECTS



2 FLOOR PLAN — CELLAR — EXISTING CONDITIONS  
— SCALE: 1/8"=1'-0"



320 ST NICHOLAS AVENUE, NEW YORK, NY 10027

GUARDIA ARCHITECTS, 233 DELAVAN AVENUE, NEWARK, NJ 07104 862-576-8066

6/2/2015