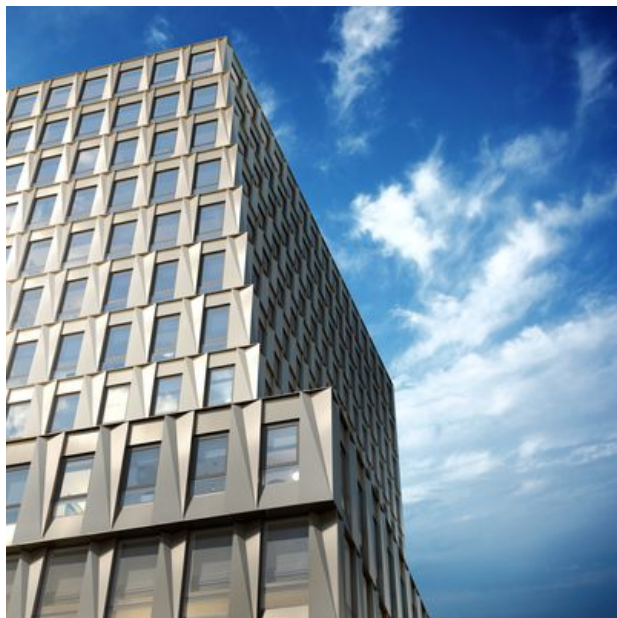


# Essex Crossing's First Condo Will Hit the Market In Early Fall

*A teaser site reveals new details on the SHoP-designed 14-story building*

BY [AMY PLITT](#) [@PLITTER](#) JUN 1, 2016, 9:05A

Construction on the former SPURA site on the Lower East Side, now known as the Essex Crossing megaproject-to-be, is moving right along, and more details about its various buildings—retail, hospitals, residences, and the like—have been coming out in dribs and drabs.



A close-up look at SHoP's building at 242 Broome Street

Now, a new [teaser site](#) has launched for the building known as Site One (a.k.a. 242 Broome Street), a SHoP-designed condo that will rise 14 stories when completed. With that comes some new details on the building: It'll be home to 55 units, a mix of one- to three-bedroom condos, and while pricing information for those units isn't currently available, a spokesperson for the project confirms that sales are due to launch in early fall.

The building is notable for its amenities, including the [bowling alley](#) that'll be operated by Splitsville Luxury Lanes. It will also be connected to the megaproject's [huge new food bazaar](#), the Market Line, which will span more than 150,000 square feet over two stories.

In terms of the design, SHoP's on the architecture, which is very SHoP-like and will feature champagne-colored aluminum covering the exterior. The interiors will be done by DXA Studio, and per the teaser site, will include "slab marble, blackened steel, [and] warm woods." Elliman will be in charge of sales once those launch.