

M.C. O'BRIEN, INC.

ESTABLISHED 1909

**449 Chester Street
Brooklyn, New York**



COMMUNITY FACILITY SPACE

William P. O'Brien, SIOR
WOBrien@MCOBrien.com
(718) 252-9191 Ext 110

Davon Peters
DPeters@MCOBrien.com
(718) 252-9191 Ext 112

PREMISES

Ground floor – ~2,256 Sq.ft

Asking Rent

Upon request

POSSESSION

Arranged

NEIGHBORS

Key Food Supermarket, Family Dollar, Associated Supermarket, Pay-O-Matic, Popeyes Louisiana Kitchen, SCO Family of Services, Davita Kidney Care, Brookdale University Hospital Medical Center

TRANSPORTATION

Bus Line: **B15, B44, B60**

Train: **3**

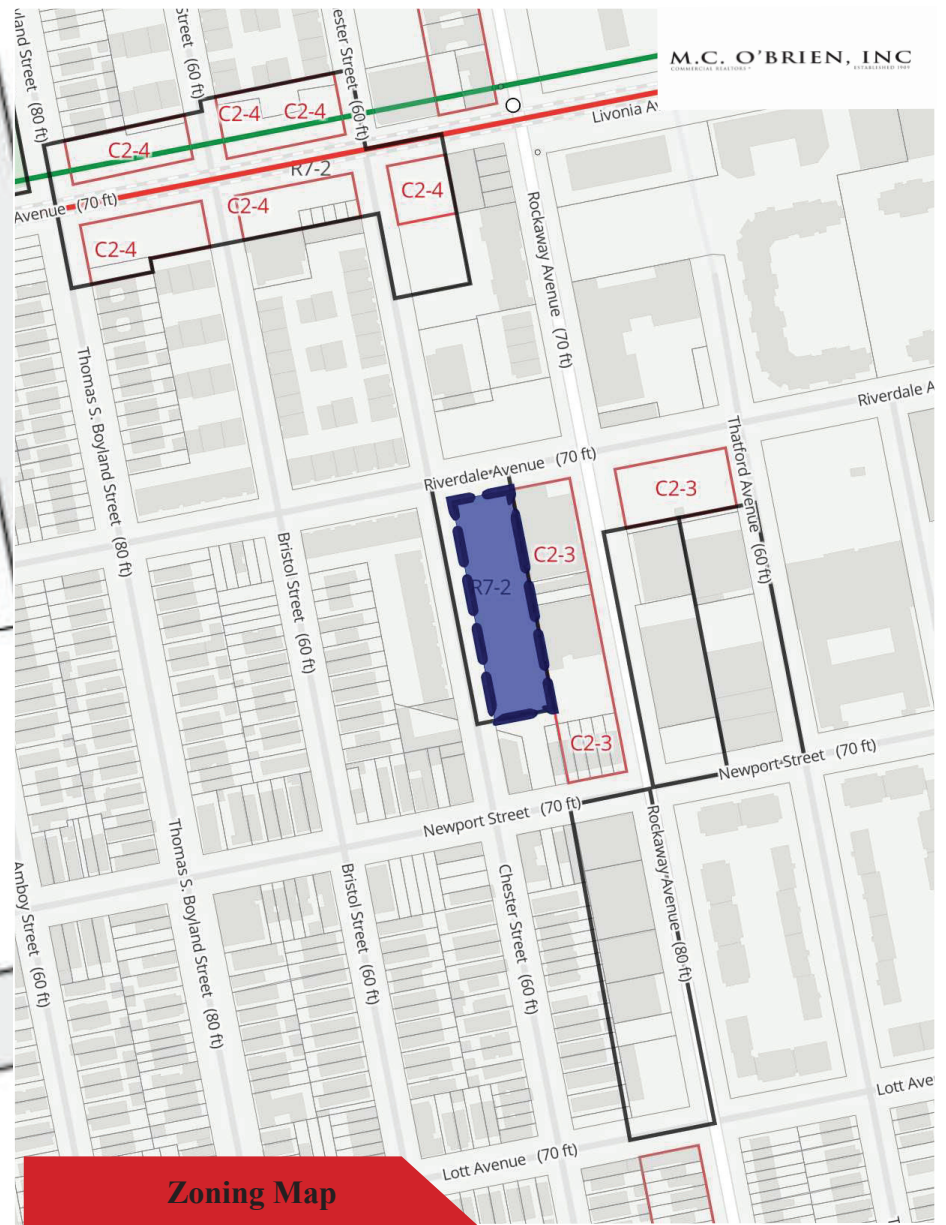
COMMENTS

- Community facility space
- ~99.5' ft. of Frontage along Riverdale Ave
- Tax abatement
- New construction
- ~179,553 Sq.Ft building with a 175 residential units
- Zoning R7-2
- Climate positive HVAC system





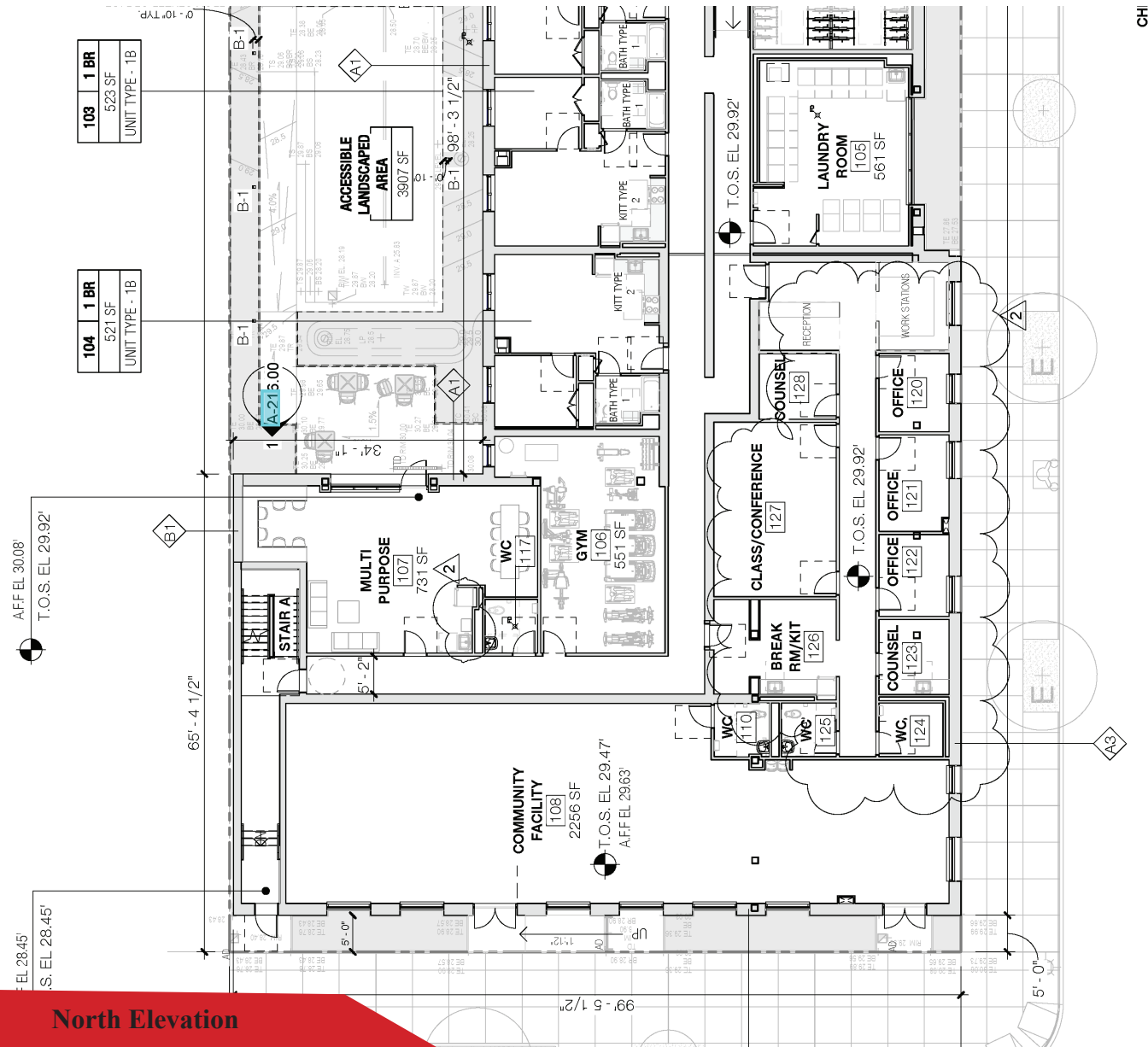
William P. O'Brien, SIOR
WOBrien@MCOBrien.com
 (718) 252-9191 Ext 110



Davon Peters
DPeters@MCOBrien.com
 (718) 252-9191 Ext 112



All offers are submitted subject to prior lease, change in price, corrections or omissions, or withdrawal from market without notice, commissions due to cooperating brokers are deemed earned after an executed brokerage agreement has been acknowledged by this office.

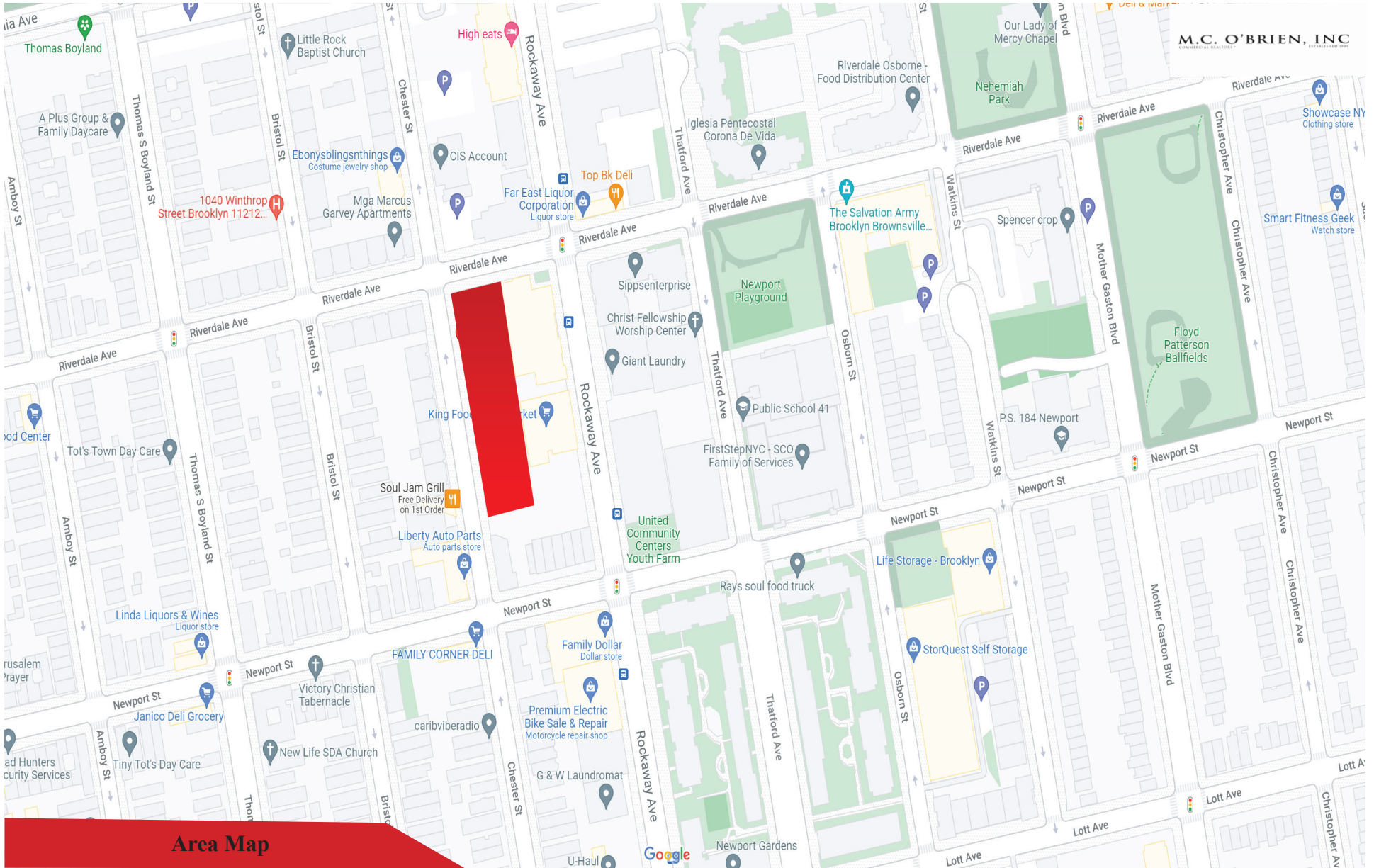


William P. O'Brien, SIOR
WO'Brien@MCO'Brien.com
(718) 252-9191 Ext 110

Davon Peters
DPeters@MCOBrien.com
(718) 252-9191 Ext 112



All offers are submitted subject to prior lease, change in price, corrections or omissions, or withdrawal from market without notice, commissions due to cooperating brokers are deemed earned after an executed brokerage agreement has been acknowledged by this office.



Area Map

William P. O'Brien, SIOR
WOBrien@MCOBrien.com
(718) 252-9191 Ext 110

Davon Peters
DPeters@MCOBrien.com
(718) 252-9191 Ext 112



All offers are submitted subject to prior lease, change in price, corrections or omissions, or withdrawal from market without notice, commissions due to cooperating brokers are deemed earned after an executed brokerage agreement has been acknowledged by this office.